



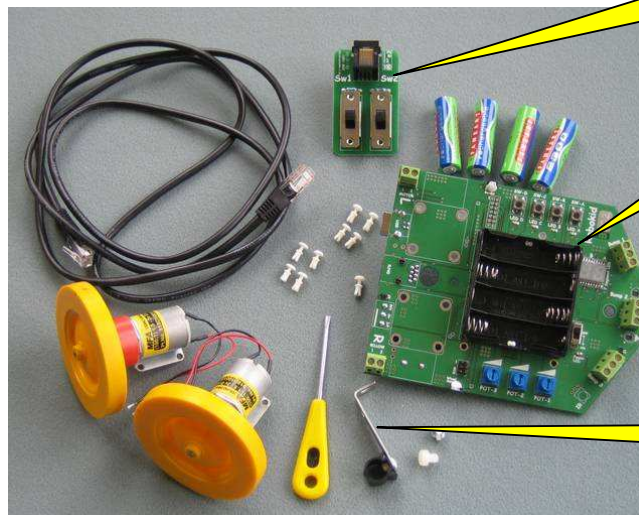
Build procedure

Unpack



When you unpack the circuit board put the bag in the bottom of the box to protect your robot when it is built.

Kit of parts



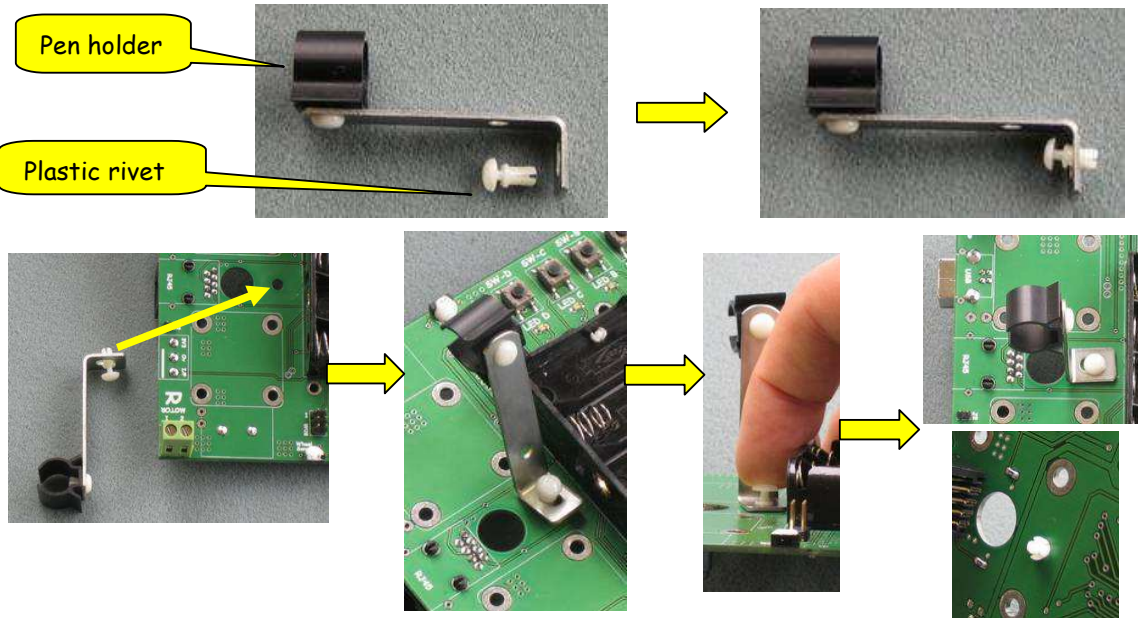
Switch
controller

Robot circuit
board

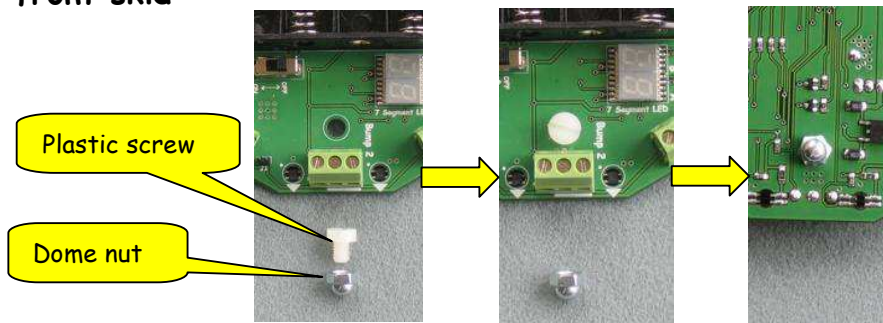
Pen holder

Build sequence

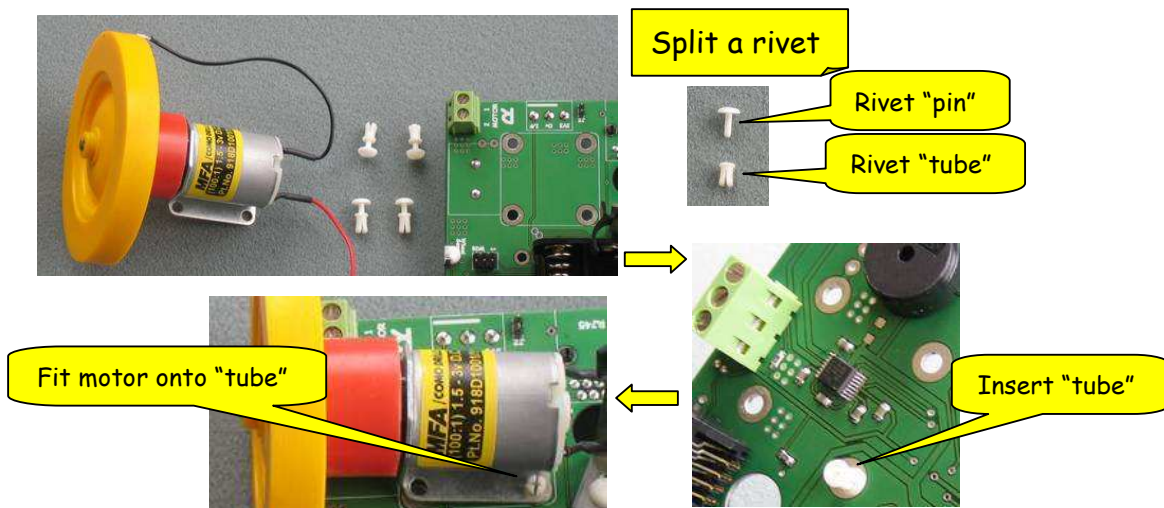
1. Fit pen holder

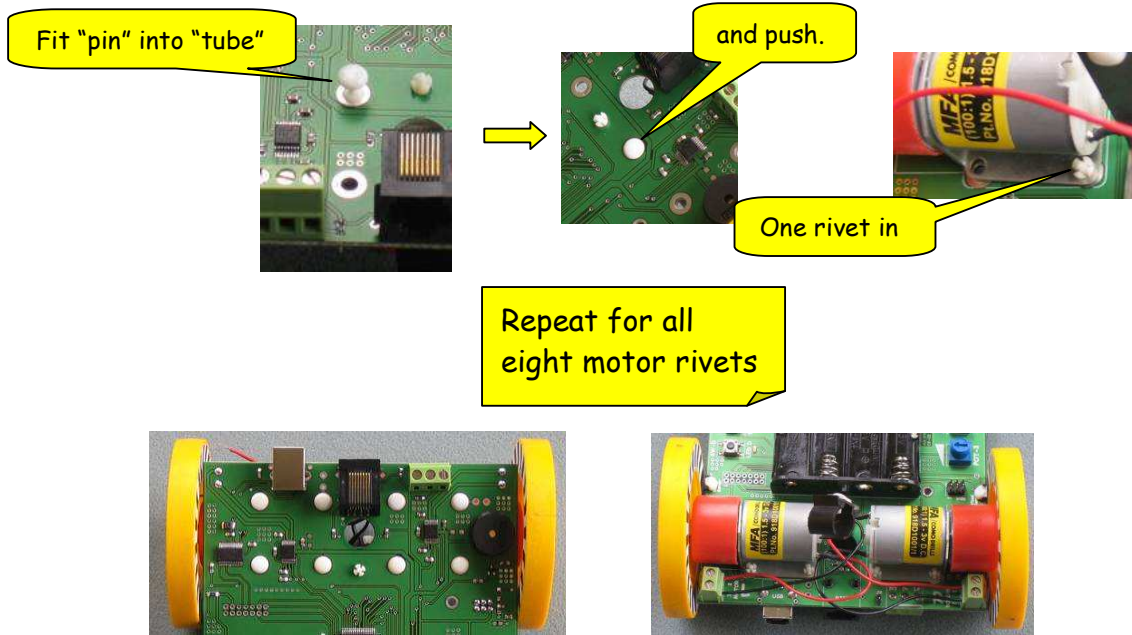


2. Fit front skid

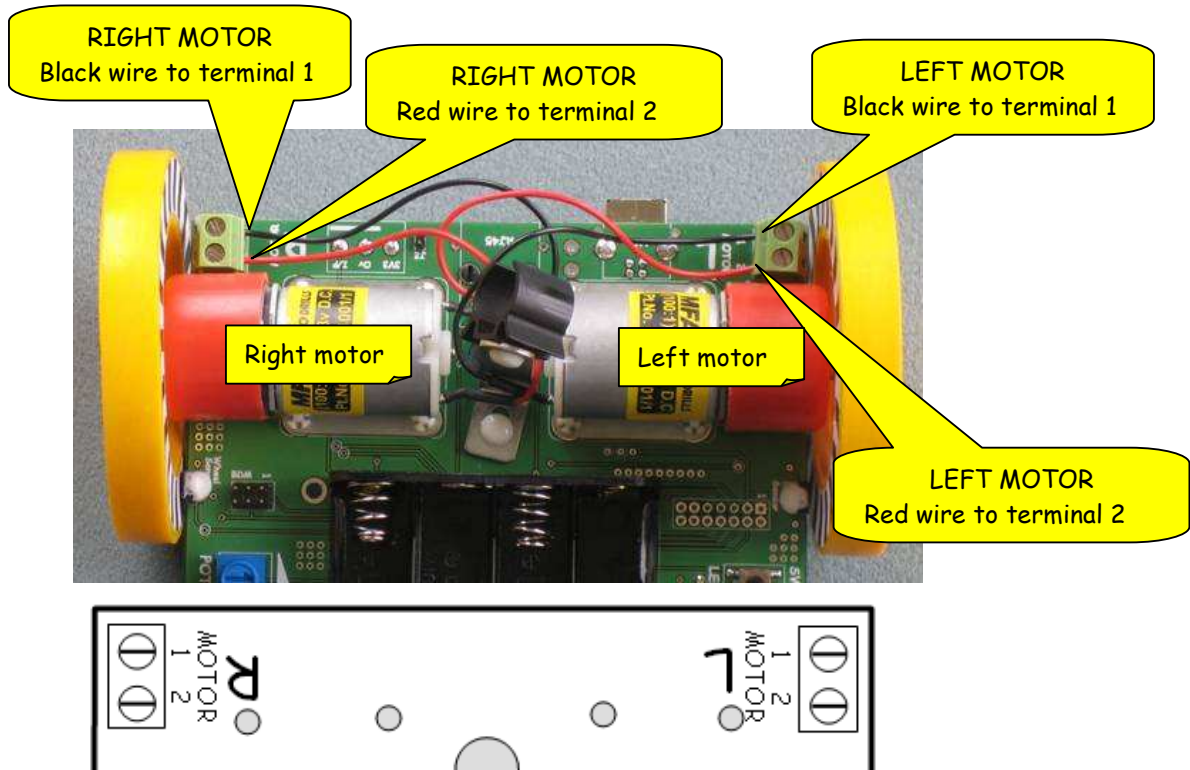


3. Fit motors

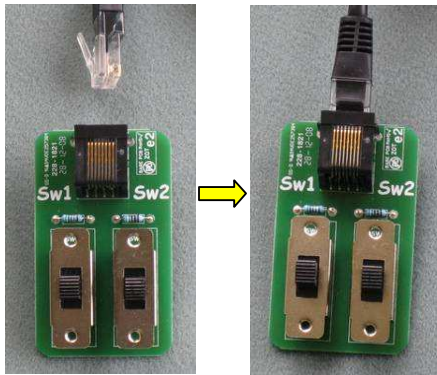




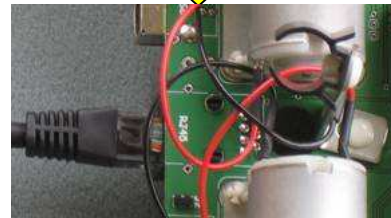
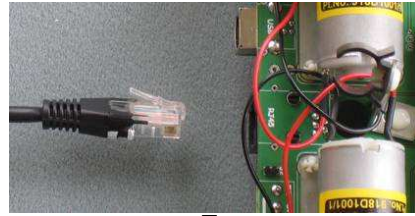
4. Wire motors



5. Connect switch controller



Connect one end of cable to the switch controller



Connect other end to the robot

6. Install batteries

